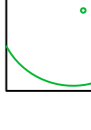




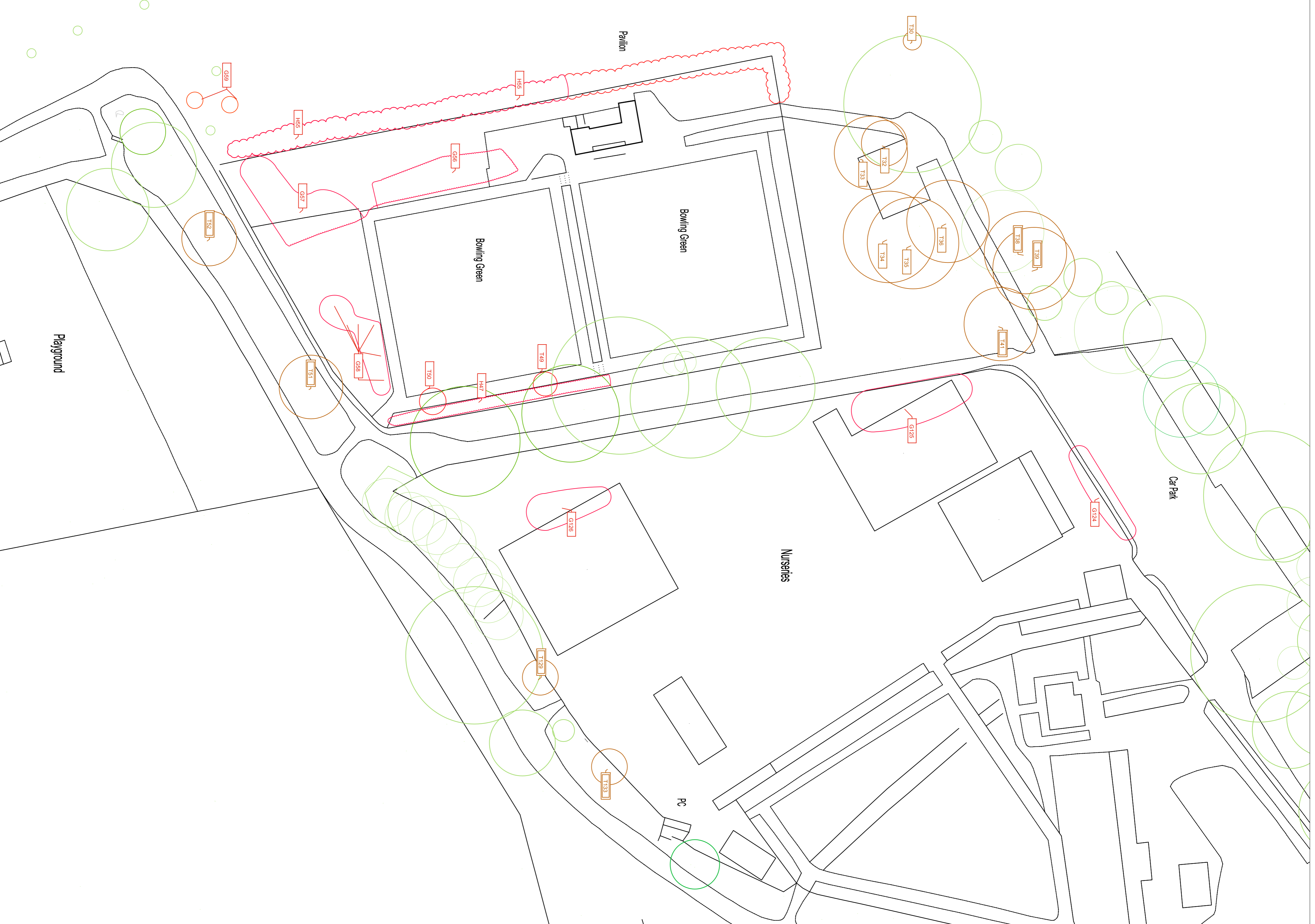


Key
 see Barrels tree report and plan ref15323-B12 for further details

	Existing mature tree - retained
	Existing mature tree showing signs of disease - to be monitored as part of park maintenance programme
	Existing young tree - removed
	Existing group of small trees removed
	Existing hedge removed



Environment and Customer Services

Major Projects and Development
 London Borough of Ealing
 Perceval House
 14 - 16 Uxbridge Road
 London W5 2HL

Project	
Gunnersbury Park Sports	
Drawing Pavilion and Car Park proposed tree removals	
Project Leader	JA
Drawn by	JA
Checked by	RD
Date	OCT15
Scale	1:500@A1
Drawing Number	Revision
GNS/SP/C/003	R01
Amendment	Date
updated to show trees park manage to watch	19Oct15
	Revision
	01