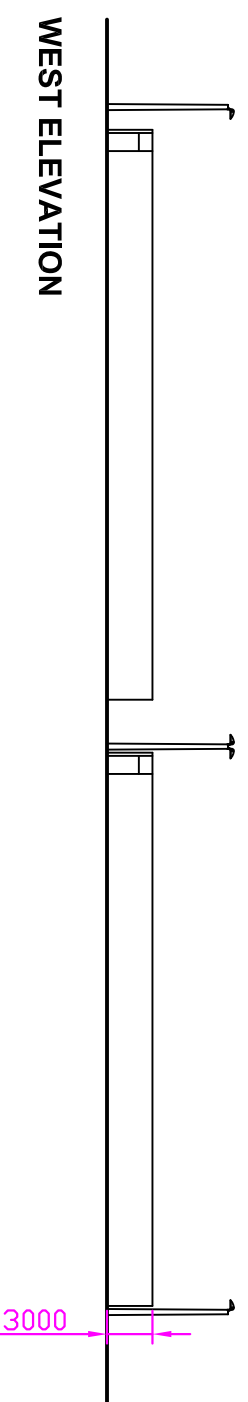
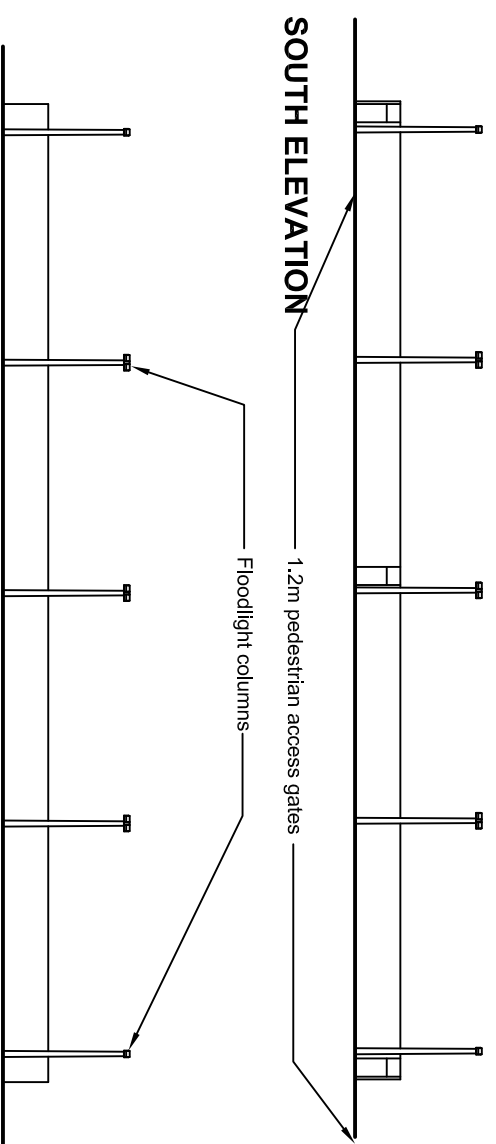


**EAST ELEVATION**



**WEST ELEVATION**



**SOUTH ELEVATION**

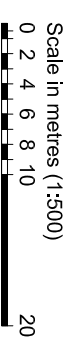
**NORTH ELEVATION**

**FENCING**

3.0m high 3.55/2.50 green plastic coated, galvanised core chain link fencing and RHS posts all to RAL 6005.  
 Corner / straining posts 60 x 60 x 3mm  
 intermediate posts 50 x 30 x 3mm.  
 1.2m wide pedestrian gates.

**FLOODLIGHTING**

15 x 8m galvanised self coloured steel alloy fixed columns.  
 32 x 2kW / low glare luminaires (4 per court).



**REVISIONS:**

A 06/10/15 Location of courts revised.

**The Sports Construction Consultancy**

227 St. Leonards Road,  
 Horsham, West Sussex RH13 6BE  
 Tel: 01403 259400  
 Fax: 01403 261250  
 E-mail: SportsCtey@aol.com  
 www.sportsconsultancy.net

**GUNNERSBURY PARK  
 SPORTS FACILITIES  
 DEVELOPMENT**

**TENNIS COURTS  
 ELEVATIONS**

SEPTEMBER 2015

SCALE: 1:500  
 (when printed @ A3 size)

SCC/IGP/AGP/24A