



Gunnersbury Park Sports 2015

Sports
Exercise
Drainage
Wildlife
Parking



Landscape setting for the Sports Hub and Pitches

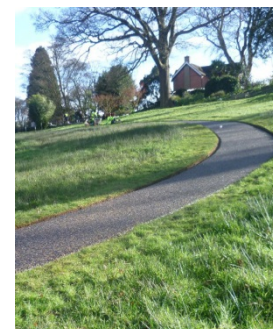
New landscaped seating area exercise station with contemporary block paving, furniture and outdoor gym equipment located outside the new sports pavilion. All materials will compliment those used on and around New building and it's terrace.

New network of accessible tarmac and hoggin footpaths link the new building and sports pitches and parking areas into the surrounding parkland.

New signage using the Gunnersbury approved suite of wayfinding and information signs

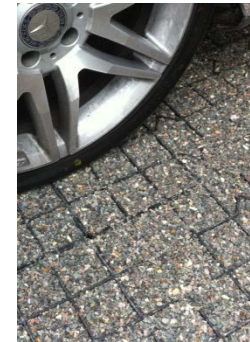
Jogging distance markers installed around the main playing field footpath network

New lighting to major pedestrian route connecting car park to building, designed to minimise light spill and disturbance to bats



Walled Garden and existing car parks

Walled garden parking - Remove existing modern glasshouses and poly-tunnels, concrete bases and old tarmac. Lay new tarmac drives and SUDS gravel-grid parking bays within a landscape framework of hedge and shrub planting, specimen trees, trained fruit trees and lawns reflecting the walled garden's heritage.



Improve existing car parks – resurface worn areas, replace grasscrete with SUDS gravel-grid surface and improve layout to define disabled bays. Protect existing trees and provide safe pedestrian routes into the park and cycle parking.

South and East boundaries – repair and restore existing walled garden brick boundary walls. Create new gateway into park from south east corner by demolishing disused toilet block.



New west and north boundary treatment - Replace existing eye-sore modern timber fence and barbed wire with evergreen mixed hedges, gabion walls and weldmesh fencing to 1.2m. Connect views between park and car park whilst screening cars.

Use permeable, bound rubber and gravel paving system for all paths in root zones of existing trees.



Playing fields - new wildlife habitats

Sustainable Urban Drainage

Connect new pitches and building storm water run-off into a system of swales and channels to regulate storm water run-off into the Potomac Lake and to improve biodiversity.



Swale – summer



Swale - winter



Swale pond

Tree and hedge planting

Remove over-mature Leylandii hedge and small tree groups in bowling green area. Plant replacement mixed native species hedge and specimen trees to provide new foraging route for bats, birds and other wildlife, to provide low wind-break for bowling greens and to soften views of new sports hub.



Wildflower meadows

Establish native tall grassland and low shrub areas on new embankments between pitches. Seed banks with native meadow mixes, and plant some areas with wildflowers and native shrubs to create new wildlife habitats and to minimise mowing on steep slopes.

